



[\[Jump to photo gallery\]](#) Collecting and using vintage costumes is part of the fun of vintage pinup. Over the years we have amassed quite a good collection of vintage costumes. In fact, there are far more outfits than we can possibly get through in a single shoot. Some of them are quite old and valuable too.

Many of them are girdles or corsets, or have been derived from various forms of corsetry. These are designed to mould and flatter the model's figure. This creates a shapely hourglass silhouette that is reminiscent of late fifties and early sixties Hollywood pinups.

The following images are an example of what is available. However it is a relatively small selection and new costumes are being added all the time.

More information

- [Modelling for us](#)
 - [Studio](#)
-

[\[View as Slideshow\]](#)



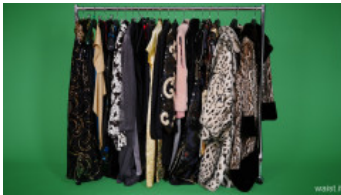
Props



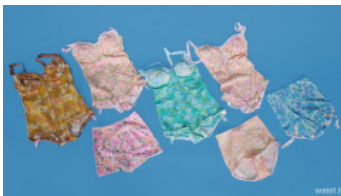
Corsets



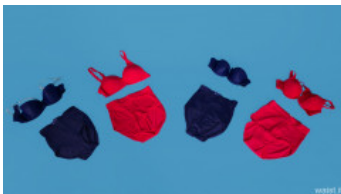
Animal prints



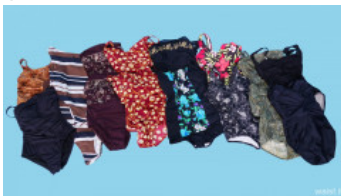
Coats and jackets



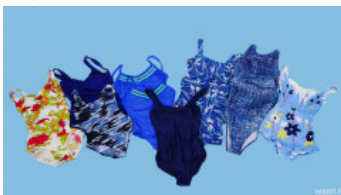
Flower power girdles
and corselets



Matching coloured red
and blue bra and
girdle sets



Tummy control pinup
style swimsuits





Swimsuits



Neon coloured
swimsuits



Red swimsuits and
bikinis



Dance costumes



Vintage girdles in light
colours



Vintage silver roll on
girdle by M&S



Vintage girdles in dark colours

[⌂ Home](#) [📄 About](#) [🔍](#)

Related Images: